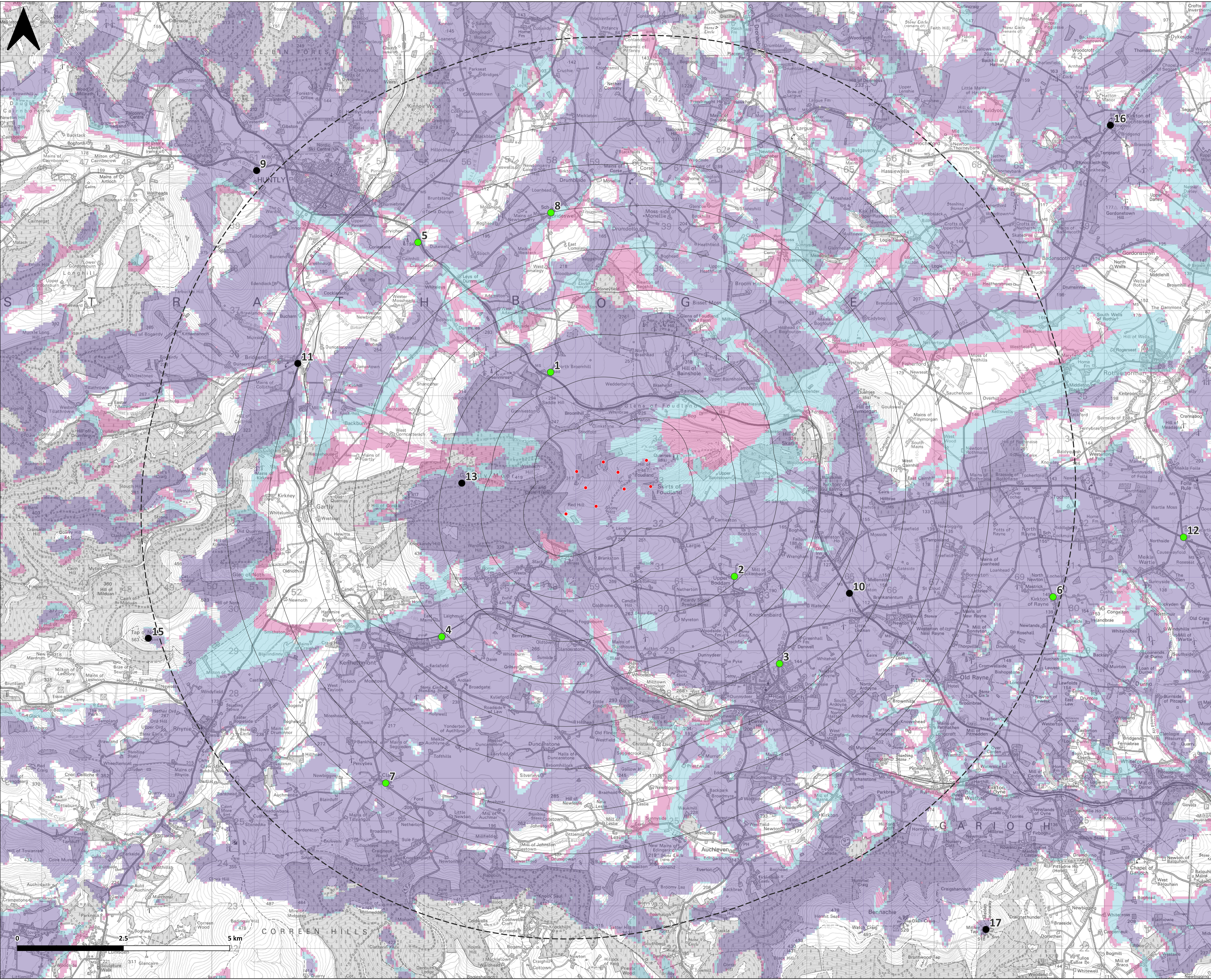


- Proposed Turbine Locations
- 10km from Proposed Turbines
- 1km Intervals from Proposed Turbines
- 1 to 3 Turbines Theoretically Visible
- 4 to 6 Turbines Theoretically Visible
- 7 to 9 Turbines Theoretically Visible
- Viewpoints on Display at the Exhibition
- Other Viewpoints to be included in the EIA

- 1 - A96, Hillhead
- 2 - Upper Boddam
- 3 - B992, Inch
- 4 - Ardmore
- 5 - A96 East of Huntly
- 6 - Kirkton of Rayne
- 7 - Clatt
- 8 - Drumblade
- 9 - Huntly
- 10 - A96 South of Colpy
- 11 - A97, Gartly
- 12 - Wartle
- 13 - Gartly Moor
- 14 - Bogniebrae*
- 15 - Tap o' Noth
- 16 - Auchterless
- 17 - Mither Tap
- 18 - B992, Whitehouse*
- 19 - B9002, Eirick*
- 20 - Hillhead North-East of Fyvie*
- 21 - Aberchirder*
- 22 - B9170 North of Inverurie*
- 23 - Oldmeldrum*

*Located outside map area



Reproduced from Ordnance Survey digital map data © Crown Copyright 2026. All rights reserved. Licence number AC000088122.